

GARGOYLE PLUSH



a free embroidery design by



GARGOYLE PLUSH

EMBROIDERY DESIGN

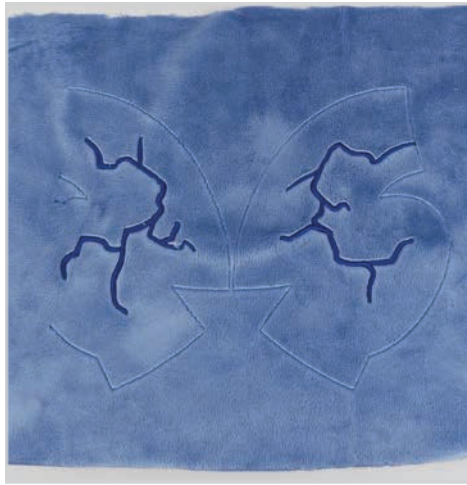
OVERVIEW

These embroidery files contain the face, inner wing, and stone crack designs for the **GARGOYLE PLUSH SEWING PATTERN**.



FACE

Stitches out eyes, nose, mouth, and eyebrows for the **HEAD FRONT (A)**.
FITS: hoops 4" x 4" and above



CRACKS

Stitches out cracks for the **BODY BACK (F)** or **ARMS (G)**.
FITS: hoops 4" x 4" and above



WINGS

Appliques inner wing markings for the **WINGS (J)**.
FITS: hoops 4" x 4" and above

MATERIALS & TOOLS:

- 8" x 9" of main fabric for **HEAD FRONT (A)**
- Two 7" x 10" pieces of main fabric for **BODY BACK (F)**
- Two 5" x 9" pieces of main fabric for **ARMS (G)**
- Two 12" x 9" pieces of main fabric for **WINGS (J)**
- Two 8" x 7" pieces of accent fabric for inner wing applique
- white or glow in the dark thread for eyes and teeth
- black thread for mouth, eyebrows, inner eyes, and nose
- thread to match applique fabric
- accent thread for cracks
- medium to heavy-weight cut-away stabilizer
- water soluble top stabilizer (if using minky)
- basic embroidery tools: (embroidery machine, embroidery scissors, spray adhesive, bobbin thread, sewing needles, embroidery hoops, masking tape)

sew desu ne?

| WWW.CHOLYKNIGHT.COM |

/// ©2024 Choly Knight /// Items sewn using this design may be sold. Credit to "Choly Knight" or "Sew Desu Ne?" is appreciated.
You may not reproduce, share, freely distribute, or sell this design as your own in digital or printed form.

FACE

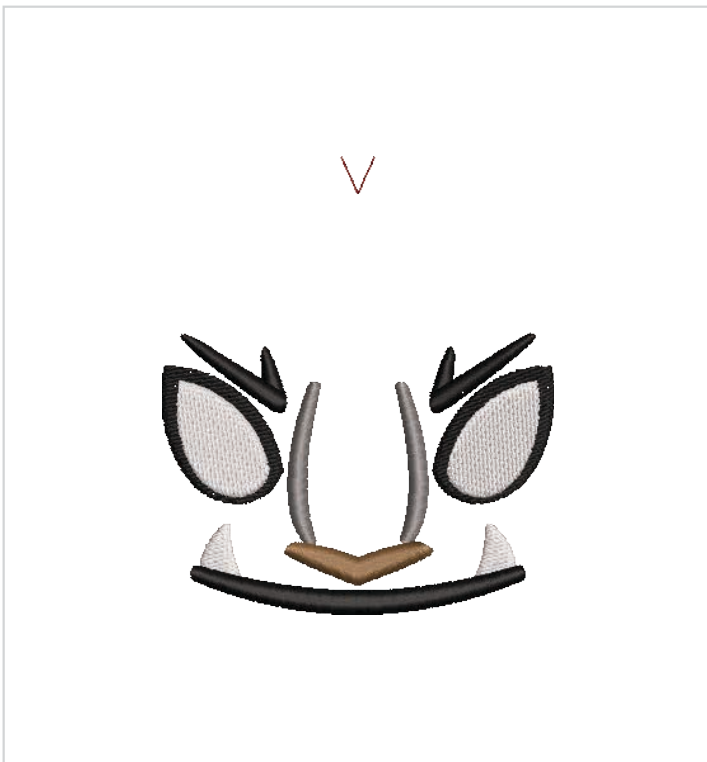
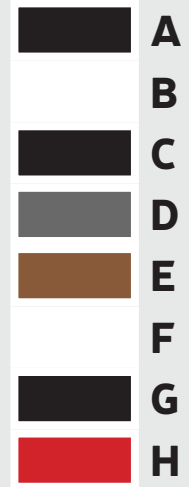
Included here are the face designs for the gargoyle **HEAD FRONT (A)**. The 4x4 version has a smaller alignment guide so it can fit in the hoop. Because these files have nearly identical instructions and colors, they're grouped together here for efficiency.

COLORS:

Colors needed: 2

- eyed, teeth
- outer eye, mouth, eyebrows, nose

Color changes: 8



GARGOYLE FACE 4x4

SIZE: 81mm x 95mm (3.2 in x 3.7 in)

FABRIC: 8" x 9" of main fabric for **HEAD FRONT (A)**



GARGOYLE FACE 5x7

SIZE: 135mm x 126mm (5.3 in x 5 in)

FABRIC: 8" x 9" of main fabric for **HEAD FRONT (A)**

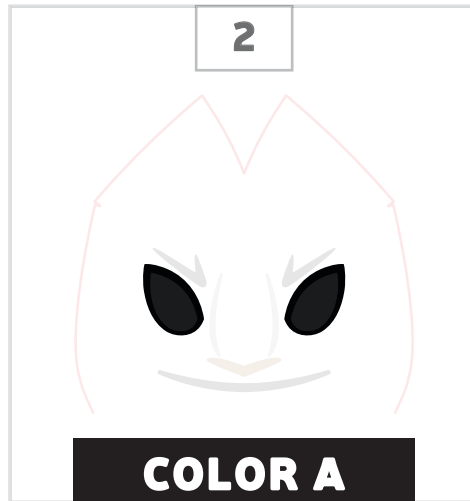
sew desu ne?

| WWW.CHOLYKNIGHT.COM |

// ©2024 Choly Knight // Items sewn using this design may be sold. Credit to "Choly Knight" or "Sew Desu Ne?" is appreciated.
You may not reproduce, share, freely distribute, or sell this design as your own in digital or printed form.

**HOOP YOUR FABRIC**

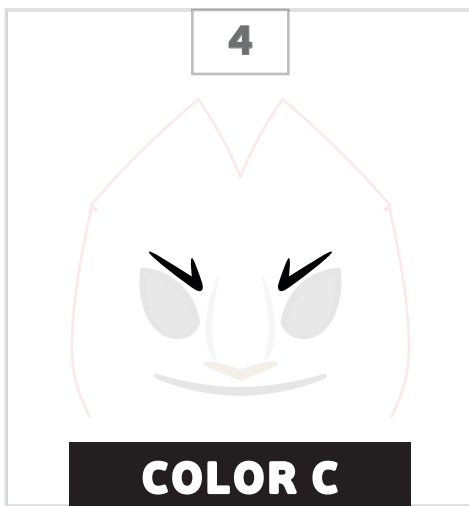
- Hoop your **HEAD (A)** fabric and cut-away stabilizer into an embroidery hoop 4" x 4" or larger.
- Hoop water-soluble stabilizer with the fabric, or tape it on afterwards.

**OUTER EYE**

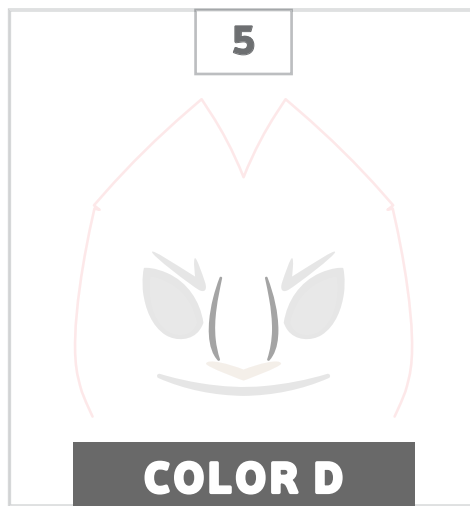
- Black or a dark accent color would work well here.

**EYES**

- White or glow-in-the-dark thread would work well here.

**EYEBROWS**

- Black or a dark accent color would work well here.

**NOSE BRIDGE LINES**

- Black or a dark accent color would work well here.

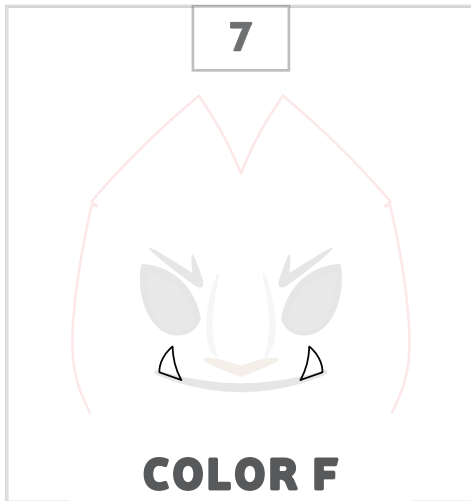
**NOSE**

- Black or a dark accent color would work well here.

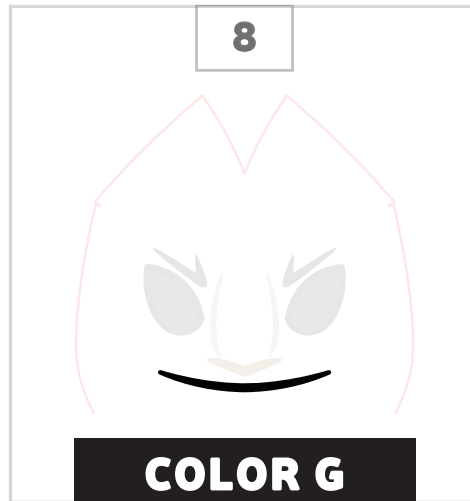
sew desu ne?

| WWW.CHOLYKNIGHT.COM |

// ©2024 Choly Knight // Items sewn using this design may be sold. Credit to "Choly Knight" or "Sew Desu Ne?" is appreciated.
You may not reproduce, share, freely distribute, or sell this design as your own in digital or printed form.

**TEETH**

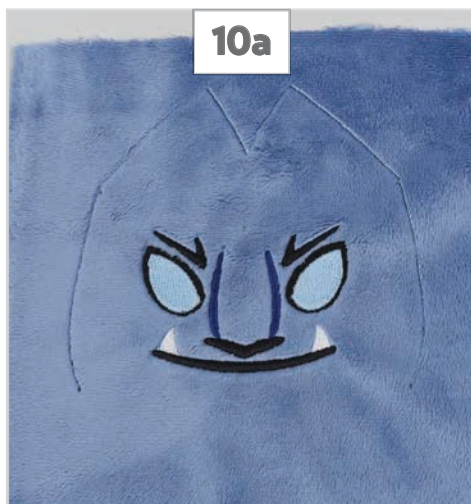
- White would work well here.

**MOUTH**

- Black or a dark accent color would work well here.

**ALIGNMENT GUIDE**

- Any color can be used for this.
- This stitches out a guideline for cutting the pattern piece.



10a



10b



10c

CUT THE PATTERN

- When finished embroidering, remove the hoop from the machine and trim the threads. Rip off the water-soluble stabilizer and cut away the backing stabilizer.
- Align the **HEAD FRONT (A)** pattern onto the embroidery, matching up the paper with the alignment stitching.
- Pin the paper pattern in place (or trace the outline). Cut around the pattern. Use the fabric as usual with the rest of the project instructions.

sew desu ne?| WWW.CHOLYKNIGHT.COM |

CRACKS

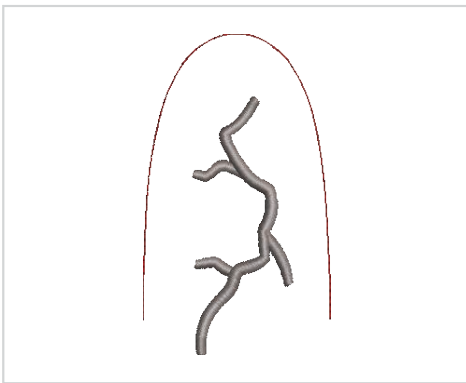
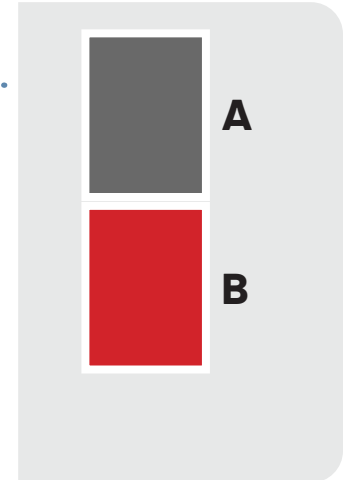
Included here are the crack designs for the gargoyle **BODY BACK (F)** AND **ARMS (G)**. The 4x4 version has a smaller alignment guide and is rotated so it can fit in the hoop. Because these files have nearly identical instructions and colors, they're grouped together here for efficiency.

COLORS:

Colors needed: 1

- cracks

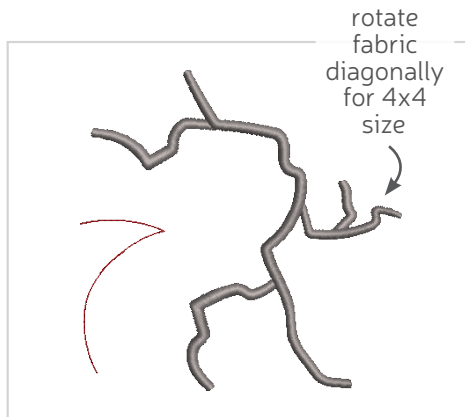
Color changes: 2



CRACKED ARM LEFT

SIZE: 53mm x 92mm (2.1 in x 3.6 in)

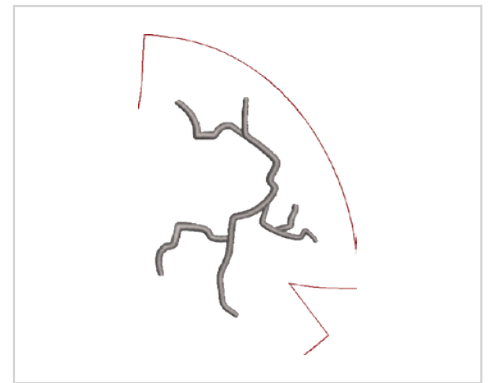
FABRIC: 5" x 9" of main fabric for **ARMS (G)**



CRACKED BODY LEFT 4x4

SIZE: 97mm x 96mm (3.8 in x 3.8 in)

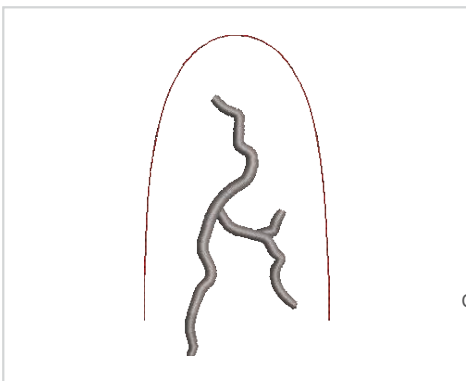
FABRIC: 7" x 10" of main fabric for **BODY BACK (F)**



CRACKED BODY LEFT 5x7

SIZE: 107mm x 157mm (4.2 in x 6.2 in)

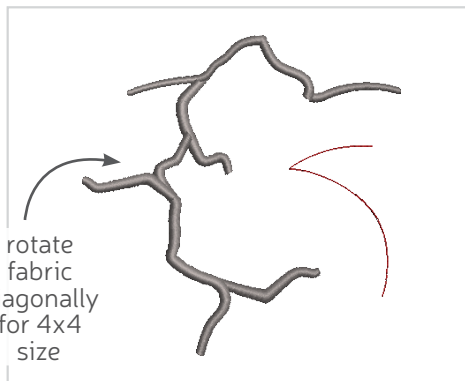
FABRIC: 7" x 10" of main fabric for **BODY BACK (F)**



CRACKED ARM RIGHT

SIZE: 53mm x 92mm (2.1 in x 3.6 in)

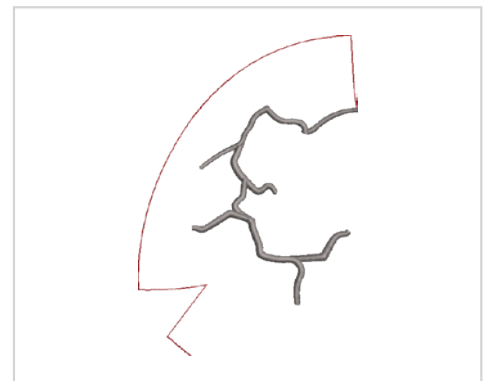
FABRIC: 5" x 9" of main fabric for **ARMS (G)**



CRACKED BODY RIGHT 4x4

SIZE: 95mm x 96mm (3.7 in x 3.8 in)

FABRIC: 7" x 10" of main fabric for **BODY BACK (F)**



CRACKED BODY RIGHT 5x7

SIZE: 107mm x 157mm (4.2 in x 6.2 in)

FABRIC: 7" x 10" of main fabric for **BODY BACK (F)**

sew desu ne?

| WWW.CHOLYKNIGHT.COM |

// ©2024 Choly Knight // Items sewn using this design may be sold. Credit to "Choly Knight" or "Sew Desu Ne?" is appreciated. You may not reproduce, share, freely distribute, or sell this design as your own in digital or printed form.

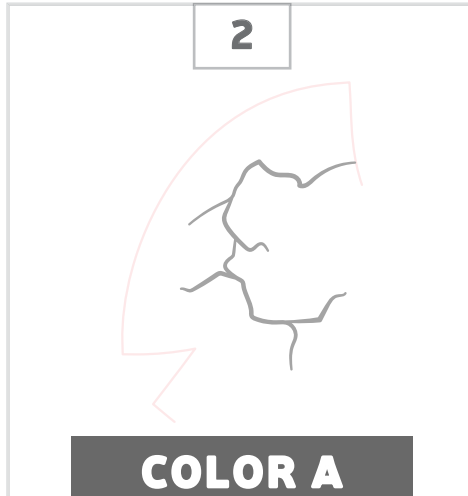


1

hoop
your
fabric and
add top
stabilizer

HOOP YOUR FABRIC

- Hoop your fabric and cut-away stabilizer into an embroidery hoop 4" x 4" or larger.
- Hoop water-soluble stabilizer with the fabric, or tape it on afterwards.

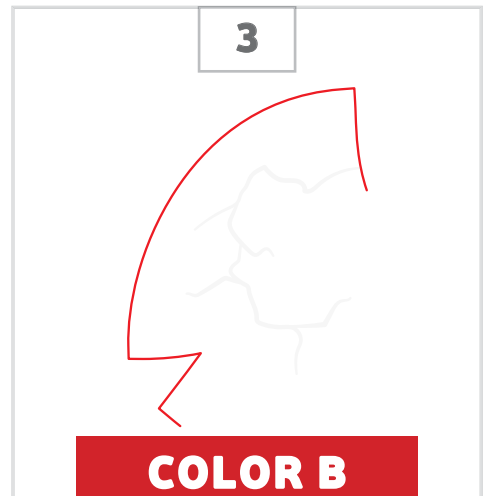


2

COLOR A

CRACKS

- Black or a color several shades darker than your main fabric would work well here.

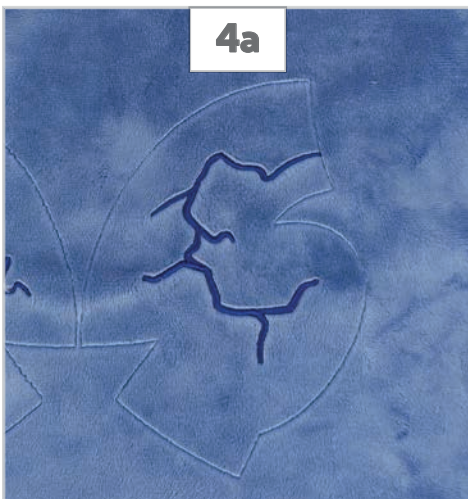


3

COLOR B

ALIGNMENT GUIDE

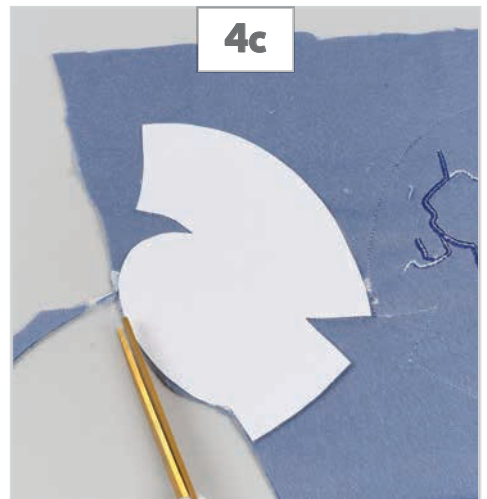
- Any color can be used for this.
- This stitches out a guideline for cutting the pattern piece.



4a



4b



4c

CUT THE PATTERN

- When finished embroidering, remove the hoop from the machine and trim the threads. Rip off the water-soluble stabilizer and cut away the backing stabilizer.
- Align the **BODY BACK (F)** or **ARM (G)** pattern onto the embroidery, matching up the paper with the alignment stitching.
- Pin the paper pattern in place (or trace the outline). Cut around the pattern. Repeat with the remaining files so you have two body pieces and two arm pieces. Use the fabric as usual with the rest of the project instructions.

sew desu ne?

| WWW.CHOLYKNIGHT.COM |

/// ©2024 Choly Knight /// Items sewn using this design may be sold. Credit to "Choly Knight" or "Sew Desu Ne?" is appreciated.
You may not reproduce, share, freely distribute, or sell this design as your own in digital or printed form.

INNER WINGS

Included here are the inner wing designs for the gargoyle **WINGS (J)**. The 4x4 version and 5x7 versions have an adjusted design that's smaller and rotated so it can fit in the hoop.

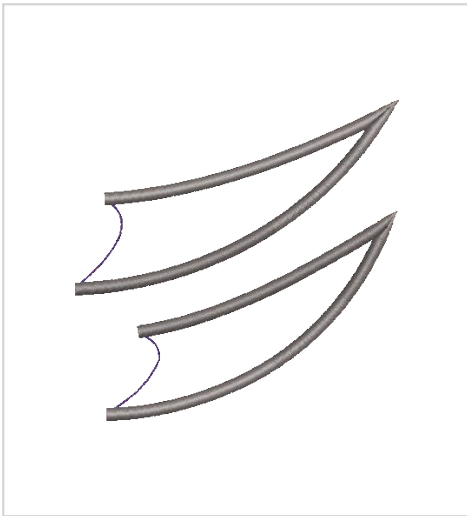
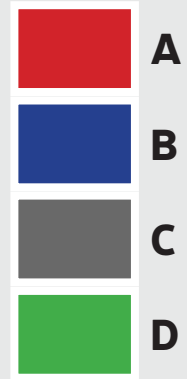
Because these files have nearly identical instructions and colors, they're grouped together here for efficiency.

COLORS:

Colors needed: 1

- inner wing outline

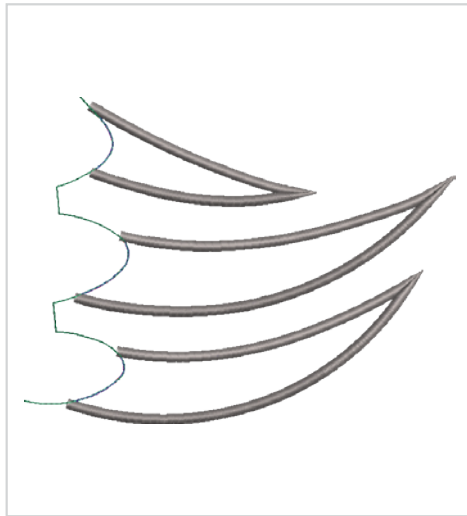
Color changes: 4



WING 4x4

SIZE: 98mm x 96mm (3.9 in x 3.8 in)

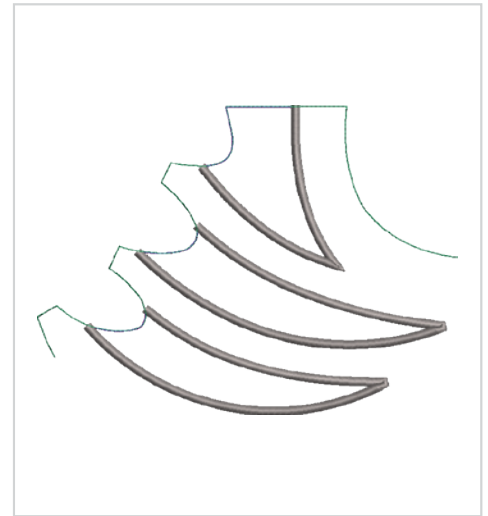
FABRIC: Two 12" x 9" pieces of main fabric for **WINGS (J)**
Two 5" x 6" pieces of accent fabric for inner wing applique



WING 5x7

SIZE: 158mm x 122mm (6.2 in x 4.8 in)

FABRIC: Two 12" x 9" pieces of main fabric for **WINGS (J)**
Two 7" x 7" pieces of accent fabric for inner wing applique



WING 6x10

SIZE: 186mm x 136mm (7.3 in x 5.4 in)

FABRIC: Two 12" x 9" pieces of main fabric for **WINGS (J)**
Two 8" x 7" pieces of accent fabric for inner wing applique

sew desu ne?

| WWW.CHOLYKNIGHT.COM |

/// ©2024 Choly Knight /// Items sewn using this design may be sold. Credit to "Choly Knight" or "Sew Desu Ne?" is appreciated.
You may not reproduce, share, freely distribute, or sell this design as your own in digital or printed form.



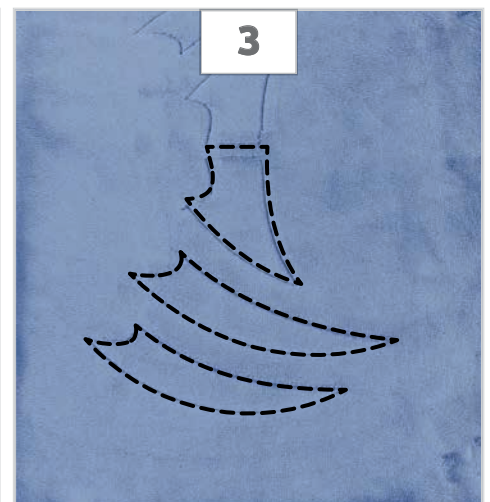
HOOP YOUR FABRIC

- The sample is hooped with the floating method, so the fabric is adhered to the top of cut-away stabilizer. Water-soluble stabilizer is taped on top later.



APPLIQUE PLACEMENT

- This creates a guideline for placing your **INNER WING** fabric.



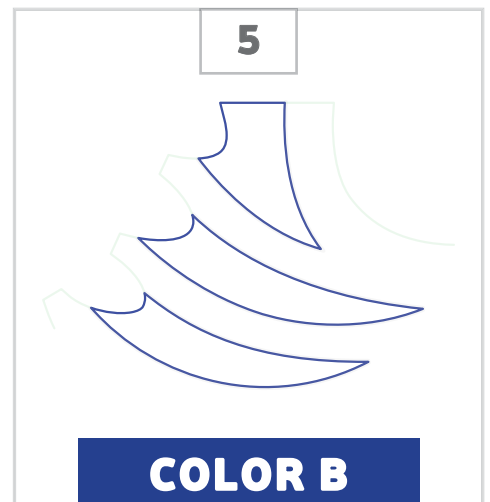
REMOVE THE HOOP

- Remove the hoop from your machine. Trim the threads.



PLACE THE APPLIQUE FABRIC

- Place the **INNER WING** fabric over the stitched guideline.
- Tape the edges of the fabric in place to hold for the next stitching.
Place the hoop back in the machine.



APPLIQUE OUTLINE

- Use a thread color that matches your applique fabric for this step.
- This secures the edge of the **INNER WING** fabric.

sew desu ne?

| WWW.CHOLYKNIGHT.COM |

/// ©2024 Choly Knight /// Items sewn using this design may be sold. Credit to "Choly Knight" or "Sew Desu Ne?" is appreciated.
You may not reproduce, share, freely distribute, or sell this design as your own in digital or printed form.



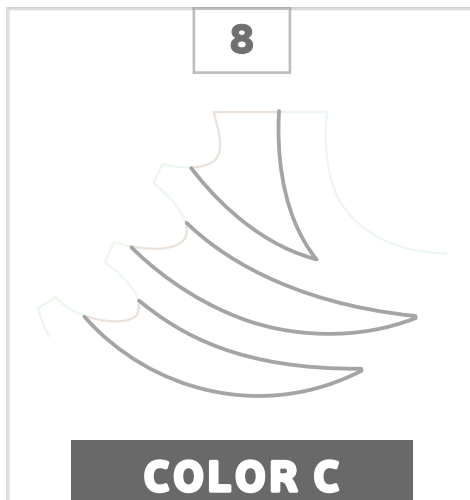
TRIM THE APPLIQUE FABRIC

- Remove the hoop from the machine. Trim the threads.
- Trim the **INNER WING** fabric as close as you can around the stitching. Use curved embroidery scissors for the best result.
- Run a lint roller over the cut edges if using a fur fabric like minky. This will eliminate any stray fuzz.



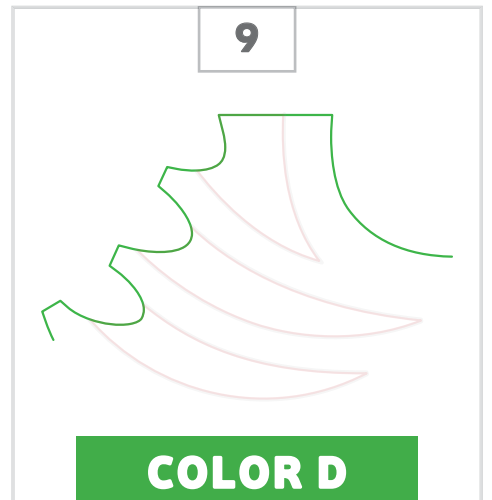
ADD THE TOP STABILIZER

- Tape water-soluble stabilizer over the whole applique area.



APPLIQUE EDGE

- Use a thread color that matches your applique fabric for the best result.
- This creates satin stitching that will cover the cut edge of your **INNER WING** fabric.

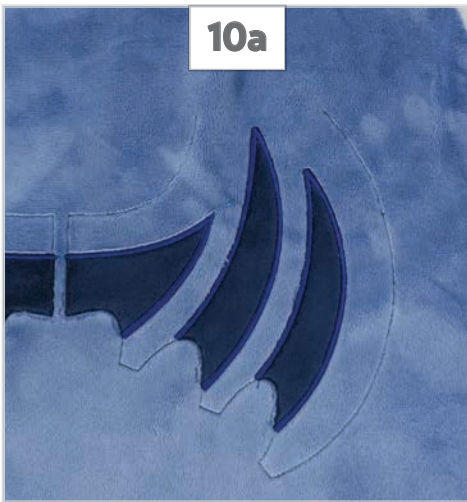


ALIGNMENT GUIDE

- Any color can be used for this.
- This stitches out a guideline for cutting the pattern piece.
- NOTE:** this color is skipped in the 4x4 version

sew desu ne?

| WWW.CHOLYKNIGHT.COM |



10a



10b



10c

CUT THE PATTERN

- a. When finished embroidering, remove the hoop from the machine and trim the threads. Rip off the water-soluble stabilizer and cut away the backing stabilizer.
- b. Align the **WING (J)** pattern onto the embroidery, matching up the paper with the alignment stitching.
- c. Pin the paper pattern in place (or trace the outline). Cut around the pattern.
Repeat with the remaining files so you have two wing pieces.
Use the fabric as usual with the rest of the project instructions.

sew desu ne?

| WWW.CHOLYKNIGHT.COM |

/// ©2024 Choly Knight /// Items sewn using this design may be sold. Credit to "Choly Knight" or "Sew Desu Ne?" is appreciated.
You may not reproduce, share, freely distribute, or sell this design as your own in digital or printed form.